

0181-008 THIS INSTRUMENT PREPARED BY
 DAVID P. LINDLEY
 OF
CAULFIELD and WHEELER, INC.
 SURVEYORS - ENGINEERS - PLANNERS
 7900 GLADES ROAD, SUITE 100
 BOCA RATON, FLORIDA 33434 - (561)392-1991

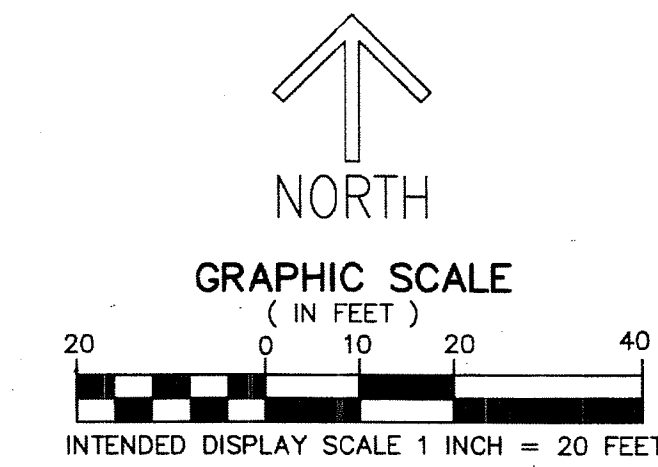
OLD PORT VILLAGE PLAT NO. 1-A REPLAT 3

BEING A REPLAT OF LOT 44A, TOGETHER WITH A PORTION OF LOT 45A, PLAT NO. 1-A, OLD PORT VILLAGE,
 AS RECORDED IN PLAT BOOK 28, PAGE 130, OF THE PUBLIC RECORDS OF PALM BEACH COUNTY, FLORIDA,
 LYING IN SECTION 4, TOWNSHIP 42 SOUTH, RANGE 43 EAST,
 PALM BEACH COUNTY, FLORIDA

152

STATE OF FLORIDA
 COUNTY OF PALM BEACH
 THIS PLAT WAS FILED FOR
 RECORD AT _____ M.
 THIS _____ DAY OF _____
 A.D. 201____ AND DULY RECORDED
 IN PLAT BOOK _____ ON
 PAGES _____ AND _____
 SHARON R. BOCK
 CLERK AND COMPTROLLER
 BY: _____
 DEPUTY CLERK

SHEET 2 OF 2



NOTES
COORDINATES, BEARINGS AND DISTANCES
 COORDINATES SHOWN ARE GRID DATUM = NAD 83 1990
 ADJUSTMENT ZONE = FLORIDA EAST
 LINEAR UNIT = US SURVEY FEET
 COORDINATE SYSTEM 1983 STATE PLANE TRANSVERSE
 MERCATOR PROJECTION
 ALL DISTANCES ARE GROUND, UNLESS OTHERWISE NOTED
 SCALE FACTOR = 1.0000428
 GROUND DISTANCE X SCALE FACTOR = GRID DISTANCE
 BEARINGS AS SHOWN HEREON ARE GRID DATUM,
 NAD 83 1990 ADJUSTMENT, FLORIDA EAST ZONE.

LEGEND ABBREVIATIONS
 Δ - DELTA (CENTRAL ANGLE)
 L - ARC LENGTH
 R - RADIUS
 CB - CHORD BEARING
 CD - CHORD DISTANCE
 C - CENTERLINE
 LB - LICENSED BUSINESS
 O.R.B. - OFFICIAL RECORD BOOK
 N - NORTHING
 E - EASTING
 ■ PRM - INDICATES SET 4" X 4" X 24" CONCRETE PERMANENT
 REFERENCE MONUMENT WITH ALUMINUM DISK STAMPED LB3591
 UNLESS OTHERWISE NOTED.

W. 1/4 CORNER OF SECTION 4
 TOWNSHIP 42 SOUTH, RANGE 43 EAST
 FOUND RAILROAD SPIKE IN SQUARE CUT
 PALM BEACH COUNTY POSITION
 N 913760.941
 E 961233.665

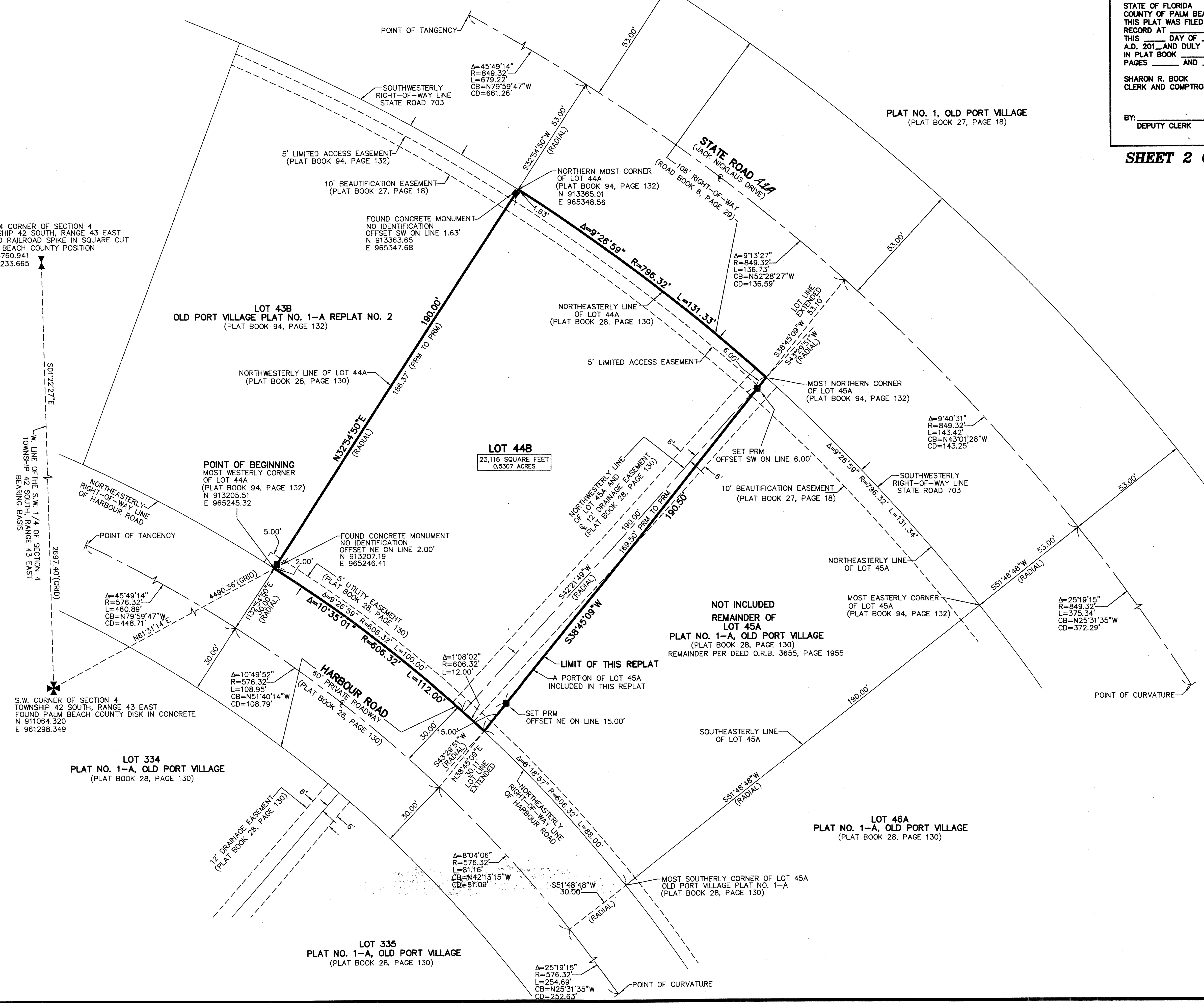
W. LINE OF THE S.W. 1/4 OF SECTION 4
 TOWNSHIP 42 SOUTH, RANGE 43 EAST
 BEARING BASIS

S.W. CORNER OF SECTION 4
 TOWNSHIP 42 SOUTH, RANGE 43 EAST
 FOUND PALM BEACH COUNTY DISK IN CONCRETE
 N 911064.320
 E 961298.349

LOT 334
PLAT NO. 1-A, OLD PORT VILLAGE
 (PLAT BOOK 28, PAGE 130)

LOT 335
PLAT NO. 1-A, OLD PORT VILLAGE
 (PLAT BOOK 28, PAGE 130)

LOT 46A
PLAT NO. 1-A, OLD PORT VILLAGE
 (PLAT BOOK 28, PAGE 130)



NOT INCLUDED
REMAINDER OF
LOT 45A
PLAT NO. 1-A, OLD PORT VILLAGE
 (PLAT BOOK 28, PAGE 130)
 REMAINDER PER DEED O.R.B. 3655, PAGE 1955